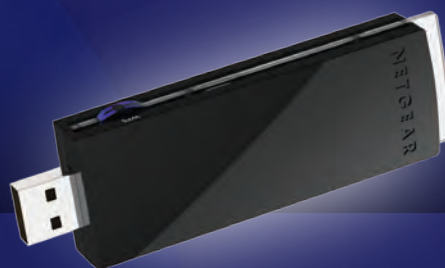


NETGEAR[®]
Connect with Innovation™

N900 Wireless Dual Band USB Adapter

WNDA4100



PRODUCT OVERVIEW

NETGEAR N900 Wireless Dual Band USB Adapter connects your notebook or desktop computer to a wireless network with ultra high speeds and is perfect for demanding applications like streaming 3D HD video, downloading and multi-player gaming. Dual band minimizes interference and offers better range for online gamers, as well as users who enjoy streaming 3D HD video. Easy setup with the NETGEAR Genie[®] CD gets you up and running fast, while Push 'N' Connect gives you a secured connection at the push of a button.

- Ultimate performance—450 + 450 Mbps of Wireless-N speed for 3D HD video streaming, multiple downloads, and online gaming, all at the same time
- Video streaming—Perfect for multiple HD or 3D HD video streams
- Dual band—2.4 GHz or 5 GHz support for less interference and better range
- Easy setup—NETGEAR Genie[®] CD with graphical installation guide
- Secured connection—Push 'N' Connect offers a secured wireless Internet connection at the push of a button
- Desktop Stand—Provides option for better desktop placement



Ultimate Performance

Ultimate wireless performance

Dual band provides less interference and better range

NETGEAR Genie®—Easy setup




Perfect for 3D HD video streaming and online gaming

THE NETGEAR DIFFERENCE - WNDA4100

- ✓ **Dual Band — Ultimate N900 WiFi performance**
- ✓ **Less interference, reliable WiFi**
- ✓ **Push 'N' Connect—Push button security**
- ✓ **Easy NETGEAR Genie® setup**
- ✓ **Compatible with any laptop/desktop**
- ✓ **Expert technical support team**

PUSH 'N' CONNECT

A secured connection at the push of a button¹

STEP 1	STEP 2	STEP 3
Install CD and push the button on the adapter	Push the Push 'N' Connect button on the router	Secure wireless connection
		

Product	Speed	Range	Surf, email, and chat	Wireless printing	Simultaneous downloads, voice, and music	Online gaming	Larger home or multiple floors	HD video streaming	Avoids interference	Streaming 3D HD video	Greater 5 GHz range
Simple Sharing N150	Up to 150 Mbps [†]	Good	✓	✓							
Work and Play N300	Up to 300 Mbps [†]	Better	✓	✓	✓	✓					
High Performance N600	Up to 300 + 300 Mbps [†]	Best	✓	✓	✓	✓	✓	✓	✓		
Ultimate Performance N900	Up to 450 + 450 Mbps[†]	Ultimate	✓	✓	✓	✓	✓	✓	✓	✓	✓

Package Contents

- N900 Wireless Dual Band USB Adapter (WNDA4100)
- USB cable with cradle
- Installation guide
- NETGEAR Genie® installation CD

Physical Specifications

- Dimensions: 94 x 28 x 13 mm (3.70 x 1.10 x .51 in)
- Weight: 23 g (0.81 oz)

Standards

- IEEE® 802.11 a/b/g/n 2.4/5 GHz

Warranty

- NETGEAR 1-year warranty

System Requirements

- Intel® Pentium® class PC
- Available USB 1.1 or USB 2.0 slot
- Microsoft® Windows® 7, XP, Vista®: (32/64-bit)

Performance

- 450 Mbps on 2.4GHz or 450 Mbps on 5GHz







Ease of Use

- NETGEAR Genie™—Easy dashboard control to manage, monitor, and repair home networks
- Push 'N' Connect using Wi-Fi Protected Setup® (WPS)¹

Security

- WiFi Protected Access® (WPA/WPA2—PSK)

NETGEAR Green Features

-  80% Recycled Packaging
-  CEC (California Efficiency)
-  RoHS
-  WEEE
-  Wireless Output Power Management
-  Cable Length Power Save



NETGEAR®

350 E. Plumeria Drive
 San Jose, CA 95134-1911 USA
 1-888-NETGEAR (638-4327)
 E-mail: info@NETGEAR.com
 www.NETGEAR.com

24/7 TECHNICAL SUPPORT*

*Basic technical support free for 90 days only

©2012 NETGEAR, Inc. NETGEAR, the NETGEAR Logo, Connect with Innovation, and NETGEAR Genie, are trademarks and/or registered trademarks of NETGEAR, Inc. and/or subsidiaries in the United States and/or other countries. Mac and the Mac logo are trademarks of Apple Inc., registered in the U.S. and other countries. Other brand names mentioned herein are for identification purposes only and may be trademarks of their respective holder(s). Information is subject to change without notice. All rights reserved.

This product is packaged with a limited warranty, the acceptance of which is a condition of sale. This product has been tested for quality assurance and this product or its components may have been recycled.

^{*}Basic technical support provided for 90 days from date of purchase.

[†]Maximum wireless signal rate derived from IEEE standard 802.11 specifications. Actual data throughput and wireless coverage will vary. Network conditions and environmental factors, including volume of network traffic, building materials and construction, and network overhead, lower actual data throughput rate and wireless coverage. NETGEAR makes no express or implied representations or warranties about this product's compatibility with any future standards.

¹Works with devices supporting Wi-Fi Protected Setup® (WPS).